

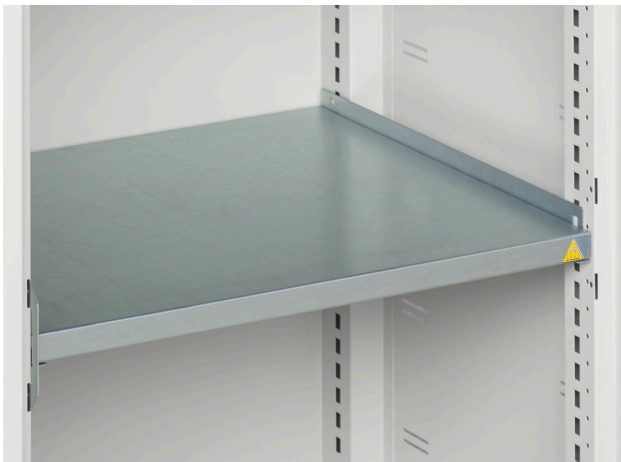
16926578. - verso kitted cupboard

Short Description

verso kitted cupboard with 2 shelves, 2 rail
WxDxH: 1050x550x2000mm

Product Images





Additional Information

| | |
|-----------------------|---|
| Product material | Sheet steel |
| Product surface | Powder coated |
| Customs tariff number | 94032080 |
| Width mm | 1050 |
| Depth mm | 550 |
| Height mm | 2000 |
| Door type | Plain |
| Door height 1 | 1925 mm |
| Product images | 1952/195242/verso_sm_16926578.19_01.jpg |

Product Options

| | |
|---------|------------------------------|
| Colour: | Light grey / Anthracite grey |
| | Light grey / Crimson red |
| | Light grey / Gentian blue |
| | Light grey / Light grey |